

# St. Peters Square

577 MID RIVERS MALL DRIVE | ST. PETERS, MO 63376



## Property Description

Located at two signalized intersections – Mid Rivers Mall Drive and St. Peter’s Square Drive/ Mexico Road, and adjacent to a new 50-home development project, St. Peter’s Square is the strong retail and suburban corridor of Mid Rivers Mall Drive. Anchored by Schnucks and Pet Supplies Plus, one available space remains (1,400 sf).

## Property Highlights

- Spaces Available - 1
- Traffic Counts & Cross Streets - Mid Rivers Mall Dr. (23,409 VPD); Mexico Rd. (17,031 VPD)

## Offering Summary

|                      |                  |
|----------------------|------------------|
| <b>Lease Rate:</b>   | Undisclosed      |
| <b>Available SF:</b> | 1,110 - 1,400 SF |
| <b>Center Size:</b>  | 108,496 SF       |

| Demographics             | 1 Mile   | 3 Miles  | 5 Miles  |
|--------------------------|----------|----------|----------|
| <b>Total Households</b>  | 4,351    | 24,782   | 66,590   |
| <b>Total Population</b>  | 10,990   | 63,674   | 166,718  |
| <b>Average HH Income</b> | \$82,938 | \$95,085 | \$99,480 |

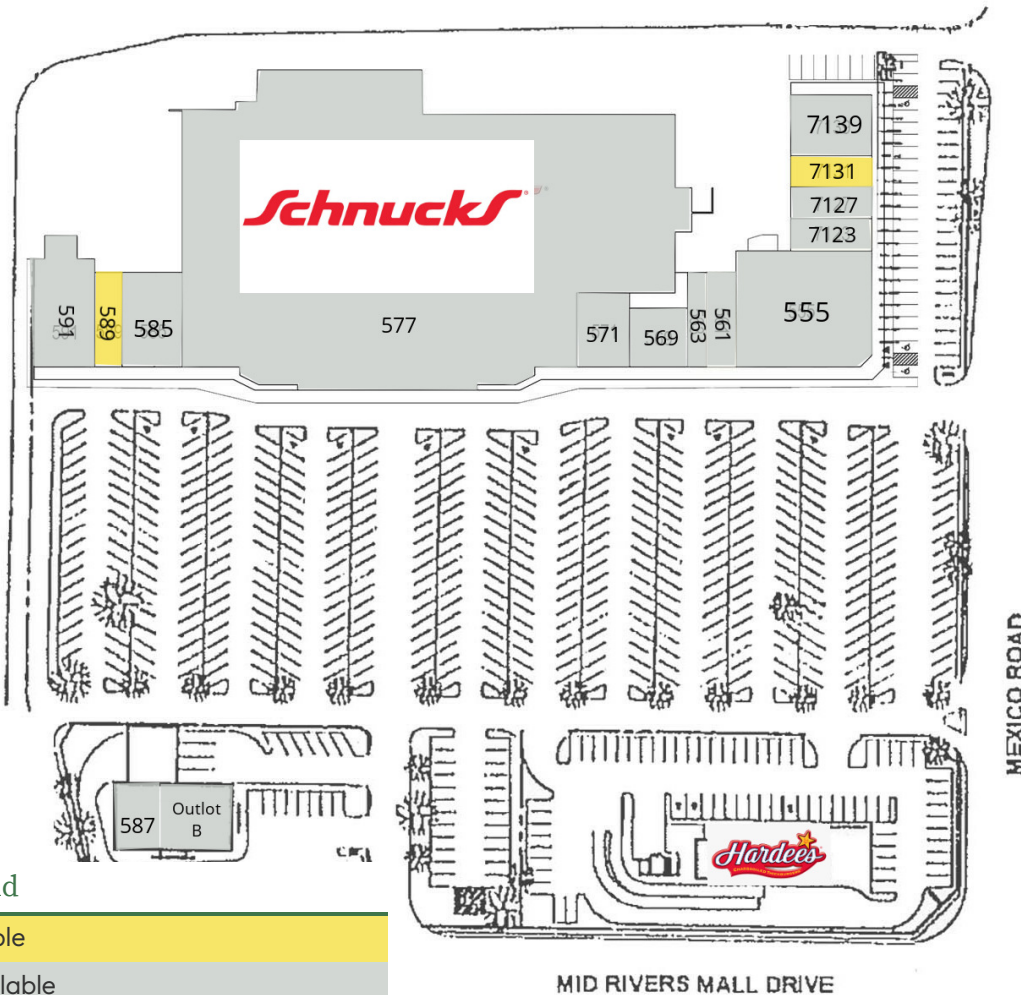
**Mark Pearl**

314.994.4050

mpearl@descogroup.com

# St. Peters Square

577 MID RIVERS MALL DRIVE | ST. PETERS, MO 63376



Legend

|             |
|-------------|
| Available   |
| Unavailable |

| Lot      | Tenant            | Size      |
|----------|-------------------|-----------|
| 555      | Pet Supplies Plus | 8,500 SF  |
| 561      | Bonsai Tea House  | 1,423 SF  |
| 563      | Great Clips       | 1,152 SF  |
| 569      | Crown Optical     | 1,524 SF  |
| 571      | Papa Murphy's     | 1,250 SF  |
| 577      | Schnucks          | 74,672 SF |
| 585      | Chiro One         | 3,150 SF  |
| 587      | SWIG              | 1,800 SF  |
| 589      | Available         | 1,400 SF  |
| 591      | AAA Auto Club     | 3,996 SF  |
| 7123     | Mathnasium        | 1,110 SF  |
| 7127     | Diamond Shoppe    | 1,110 SF  |
| 7131     | Available         | 1,110 SF  |
| 7139     | El Maguey         | 3,600 SF  |
| Outlot B | Heartland Dental  | 2,700 SF  |

Mark Pearl

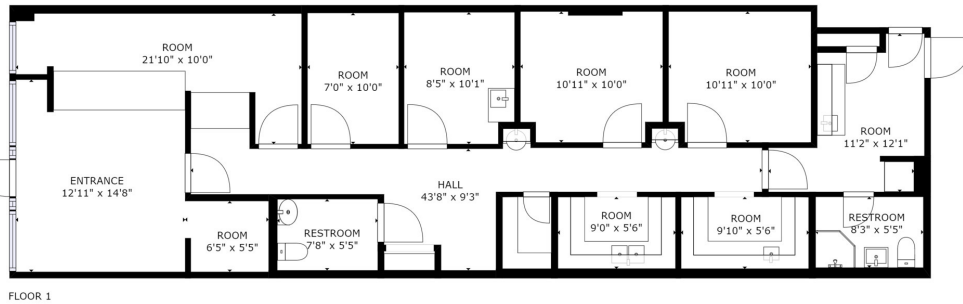
314.994.4050

mpearl@descogroup.com

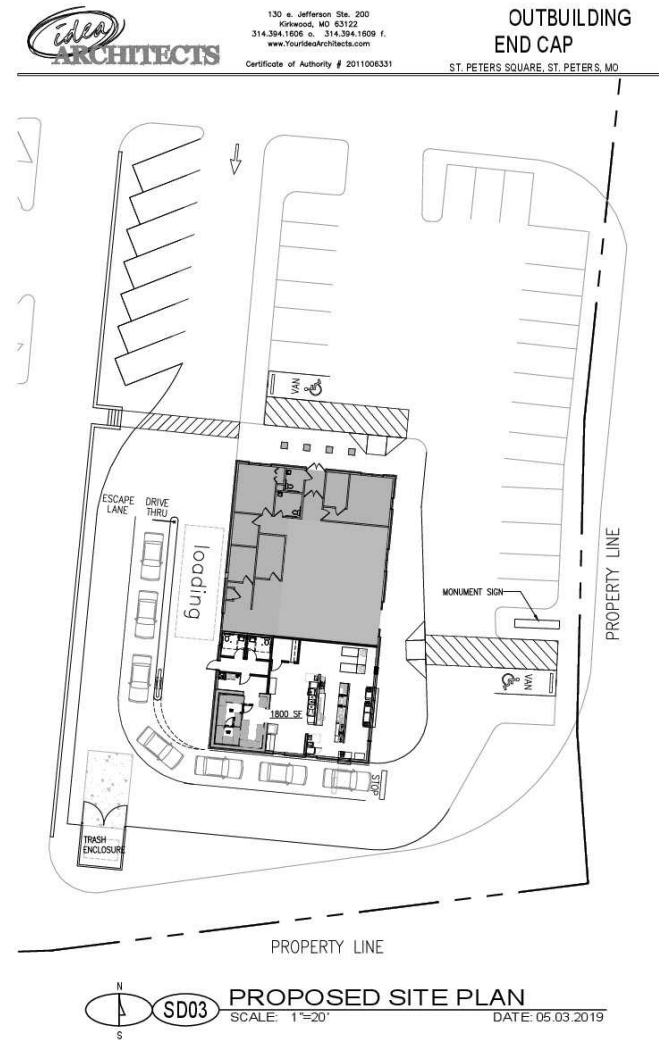


# St. Peters Square

577 MID RIVERS MALL DRIVE | ST. PETERS, MO 63376



GROSS INTERNAL AREA  
FLOOR 1: 1350 sq. ft.  
TOTAL: 1350 sq. ft.  
SIZES AND DIMENSIONS ARE APPROXIMATE, ACTUAL MAY VARY.



Mark Pearl

314.994.4050

mpearl@descogroup.com

# St. Peters Square

577 MID RIVERS MALL DRIVE | ST. PETERS, MO 63376



**Mark Pearl**  
314.994.4050  
mpearl@descogroup.com